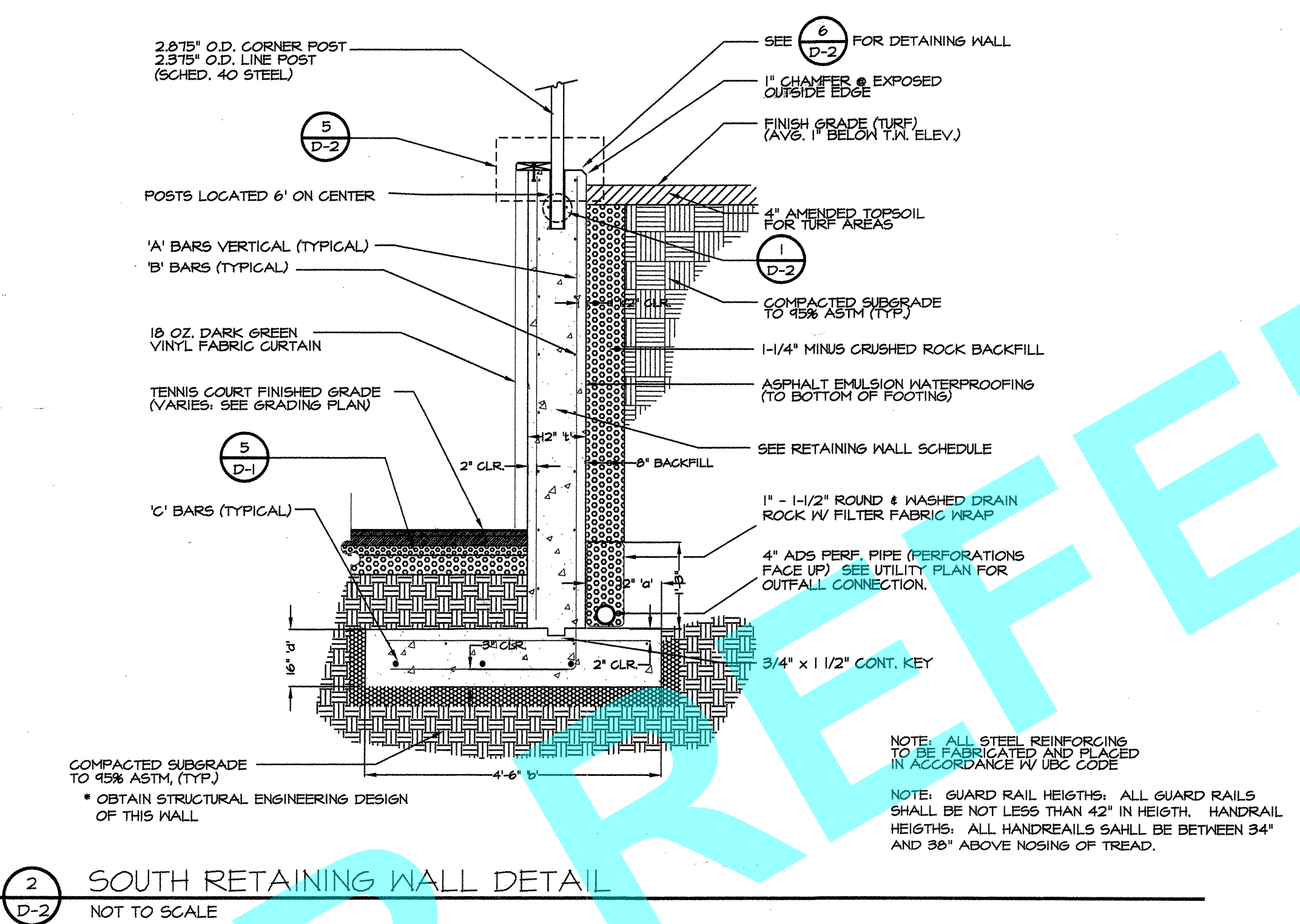
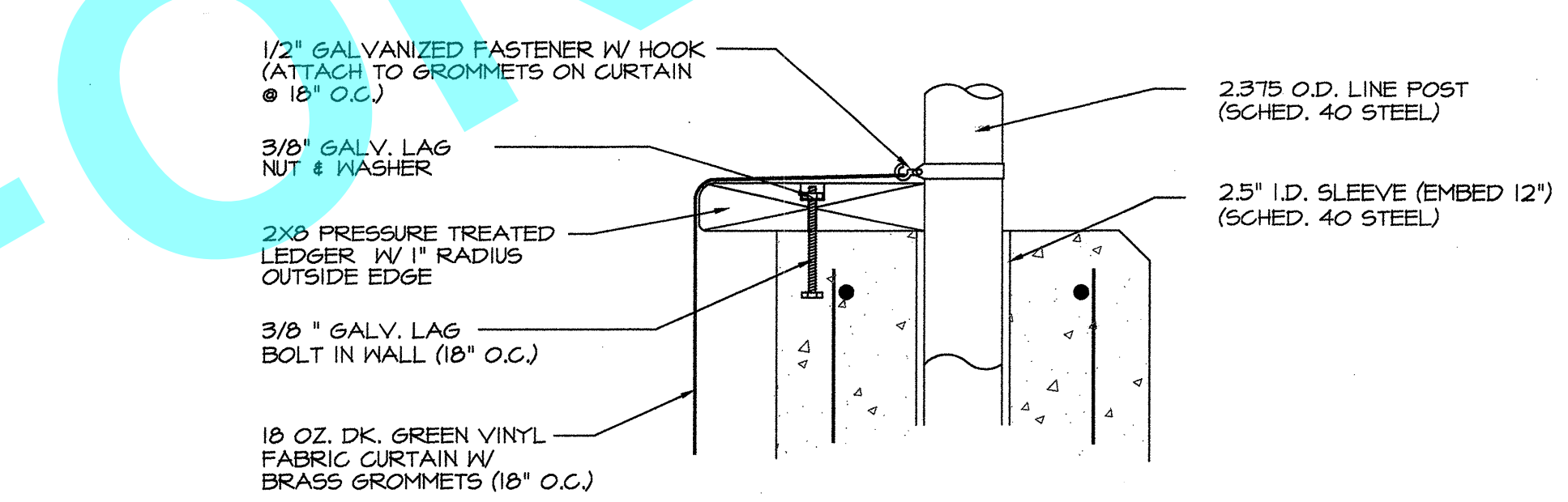


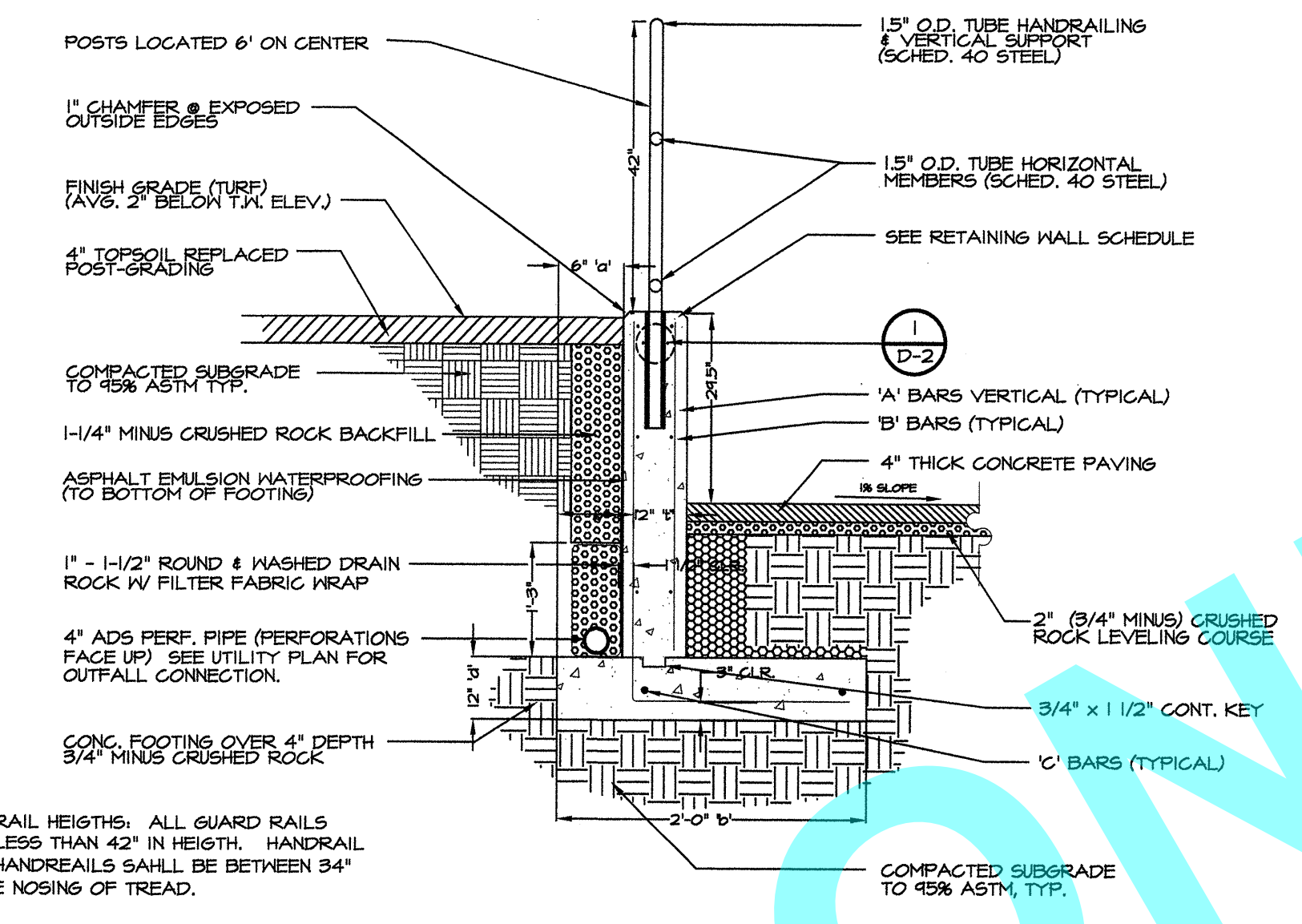
1 STAIR SECTION (TYPICAL)
D-2 NOT TO SCALE



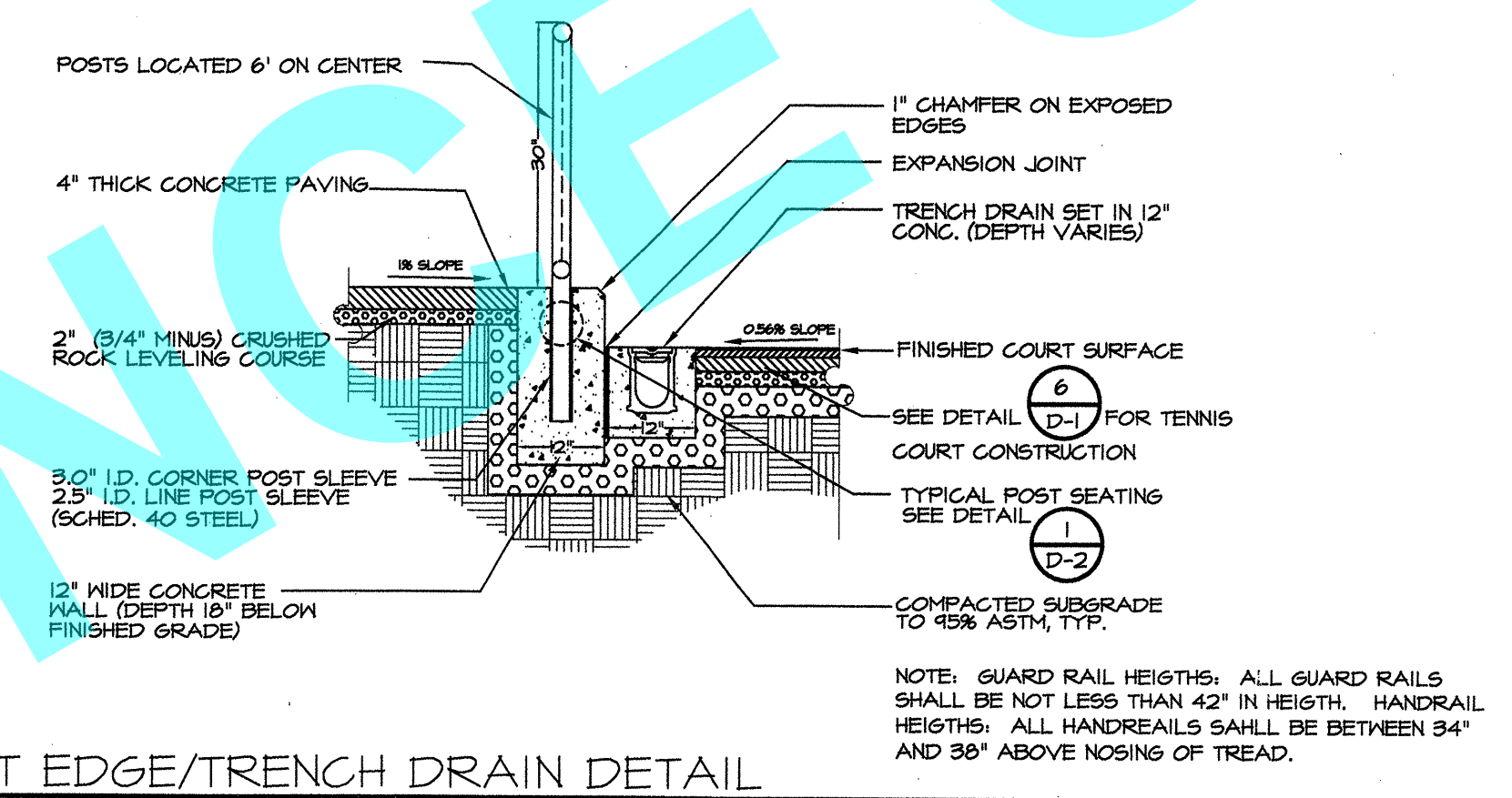
2 SOUTH RETAINING WALL DETAIL
D-2 NOT TO SCALE



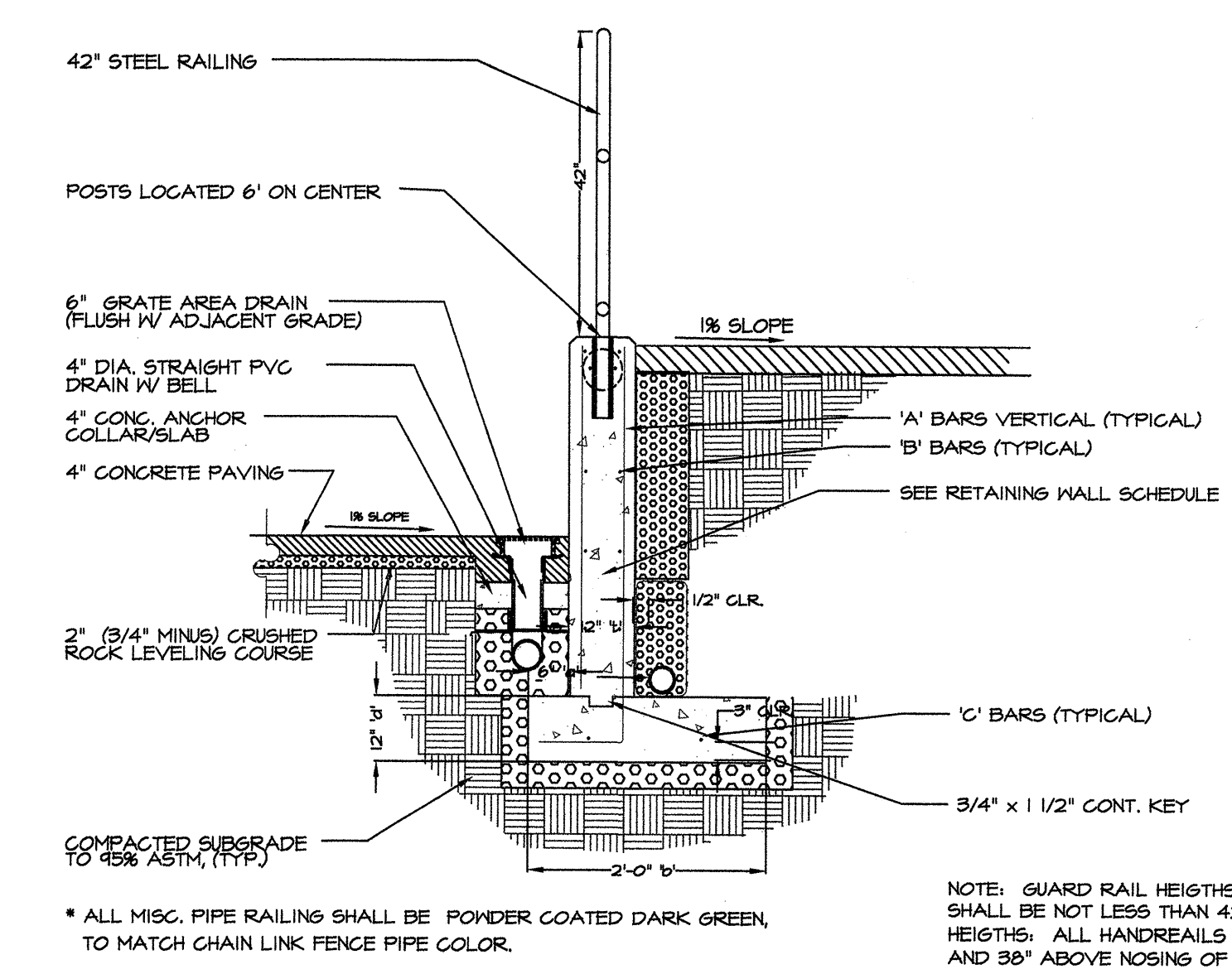
5 CURTAIN CONNECTION DETAIL
D-2 NOT TO SCALE



3 SIDE COURT RETAINING WALL DETAIL (WEST)
D-2 NOT TO SCALE



4 COURT EDGE/TRENCH DRAIN DETAIL
D-2 NOT TO SCALE



6 SIDE COURT RETAINING WALL DETAIL (EAST)
D-2 NOT TO SCALE

MAX H'	b'	d'	t'	u'	A' BARS	B' BARS	C' BARS
4'-0"	6'-0"	1'-6"	12"	12"	#5@12"	#5@12"	(4) #5
7'-0"	4'-6"	1'-4"	12"	12"	#5@16"	#5@16"	(3) #5
5'-0"	3'-0"	1'-0"	12"	6"	#4@16"	#4@16"	(2) #5
3'-0"	2'-0"	1'-0"	12"	6"	#4@16"	#4@16"	(2) #5

7 RETAINING WALL SCHEDULE
D-2 NOT TO SCALE

MIG
MOORE IACOFANO GOLTSMAN, INC.
412 NW 13TH Avenue
Portland, OR 97209
Tel 503 / 297-1005
Fax 503 / 297-3195
Web www.migcom.com

CONSULTANTS
443 SW CORBETT AVE.
PORTLAND, OR 97204
503-297-1005
503-297-3195

PBS

INTERPAGE ENGINEERING
ARCHITECTS

PROPOSED TENNIS COURT ADDITION
BEAVERTON, OREGON
GREATER PORTLAND TENNIS COUNCIL
15707 SW WALKER ROAD
BEAVERTON, OREGON

SHEET TITLE
CONSTRUCTION DETAILS #2

STAMP
Kam Appa

DATE	REVISIONS
2/24/03	Planning Revisions
5/23/03	Building Permit Revisions

DATE 12/31/02	FILE NAME Construction Details #2.dwg
DRAWN BY LG	SHEET D-2
JOB NO. 3667.00	
SCALE VARIES	

turn-in set 5x-2003010